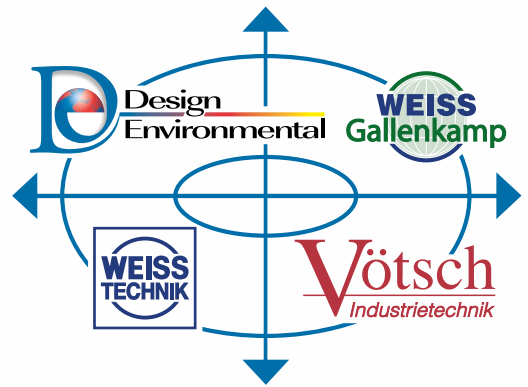


WVC Global Simulation Test Chambers



Model WVC Temperature & Humidity Test Chambers

The external bodywork is a single shell construction in zinc coated steel with a powder-coated finish, providing a robust and easily cleaned surface.

The test chamber comprises a vapour tight welded stainless steel inner with a number of shelf supports built into the side walls allowing shelving to be adjustable in height. Double emission-free silicone gaskets combined with a self-tensing lock mechanism provide an effective seal between test space and door.

Minimum heat loss is achieved by compacted mineral wool insulation within the chamber wall cavity.

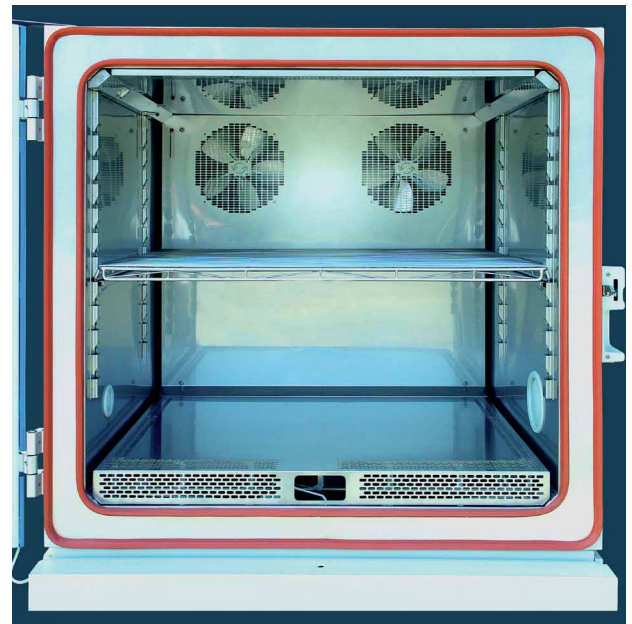
An innovative humidification water bath humidifies the air stream assuring rapid and aerosol free humidity control over a wide range. Dehumidifying is accomplished by a refrigerated cold spot, which can also be activated to provide an anti condensation function to limit "wetting out".

Operation & Control

A colour touch panel represents the interface between the operator and the test chamber's **S!Mpac*** controller. Self-explanatory graphic symbols create an intuitive user interface with storage for 100 programs. Even complex test profiles can be defined with ease. A selection of international testing standards is pre-programmed and readily available.

The **S!Mpac*** controller not only supervises the highly accurate control of set values for temperature and humidity but also monitors all internal functions of the test chamber during operation. **S!Mpac*** also provides protection for the chamber and test specimen.

Communications are available via TCP/IP, ASCII-Interface, RS232, RS485, Digital-I/Os and also USB interface.



Unrivalled Standard Features

- Colour touch panel operation and 32-bit control system
- Extensive networking capabilities via TCP/IP
- 4 x potential-free digital switches
- Welded stainless steel inner test space
- Air-cooled refrigeration unit
- Specimen protection against condensation
- Over and under temperature specimen protection
- Moveable and height adjustable design
- 2 x standard entry ports (Ø50 and Ø125 mm)
- 1 x wire shelf with height adjustment
- Fault diagnosis system for maintenance and repair
- Multi glazed, heated window in door included
- Low Voltage test space lighting
 - Lockable door
 - Humidity water tank with water level indicator
 - Automatic or manual water replenishment



SPECIFICATIONS

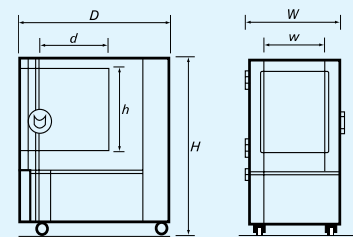
MODEL WVC TEMPERATURE & HUMIDITY CHAMBERS

Model Number	C180-40	C340-40	C340-70	C600-40	C600-70	C1000-40	C1000-70	C1500-40	C1500-70
Volume (Litres)	190	335	335	600	600	990	990	1540	1540
Internal chamber dimensions									
Width <i>w mm</i>	580	580	580	800	800	1100	1100	1100	1100
Depth <i>d mm</i>	450	765	765	800	800	950	950	1475	1475
Height <i>h mm</i>	750	750	750	950	950	950	950	950	950
External chamber dimensions									
Width <i>W mm</i>	870	870	870	1090	1090	1390	1390	1390	1390
Depth <i>D mm (excl. touch screen control panel)</i>	1285	1600	1600	1655	1655	1805	1805	2330	2330
Height <i>H mm</i>	1780	1780	1780	2048	2048	2048	2048	2048	2048
Chamber weight									
Weight <i>kg</i>	425	475	520	610	675	850	950	930	1110
Temperature Range									
Max temp °C	+180	+180	+180	+180	+180	+180	+180	+180	+180
Min temp °C	-40	-40	-70	-40	-70	-40	-70	-40	-70
Rate of cooling (°C/min) with an empty chamber in accordance with IEC600068-3-5	3.5	3.5	3	3	2.5	3	2.5	2.5	2.3
Rate of heating (°C/min) with an empty chamber in accordance with IEC600068-3-5	4	3.2	3	4	4	4	4	3.5	3.5
Humidity Range between +10°C and +95°C	10% RH to 98% RH								
Electrical supply required	380/415 Volts, 3 phase E&N, 50Hz								
Max. power in kW	6	6	9	15	20	23	28	23	28
Max. current drawn in Amps / phase	13	13	16	16	21	29	32	29	32
Acoustic pressure in dBA	58	58	60	66	66	66	70	66	70
Refrigeration plant condenser cooled by	Air	Air	Air	Air	Air	Air	Air	Air	Air

Notes:

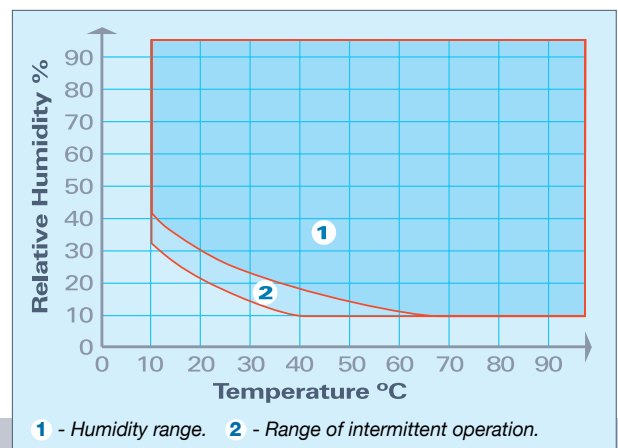
- Temperature and humidity performance data is taken at the control sensor with an empty test space
- Temperature deviations in time are measured after stabilisation at set values
- Temperature changing rates are evaluated according to IEC 60068-3-5
- The performance values refer to +25°C ambient temperature

This literature is for general guidance only. It does not constitute recommendations, representations or advice and nor is it part of any contract. Our policy is one of continuous product improvement and the right is reserved to modify the specifications contained herein without notice.



Options

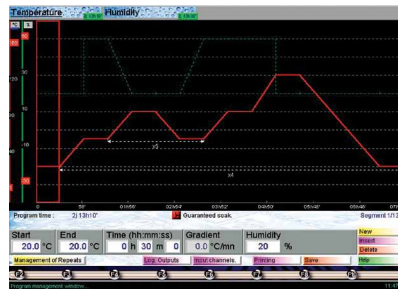
- Additional cable access ports
- Additional shelves
- Adjustable laptop support arm
- Contour programming and logging software
- SIMPATI* programming and logging software
- Extended warranty
- Service contracts post warranty



Model WVC Control Software Options

Contour

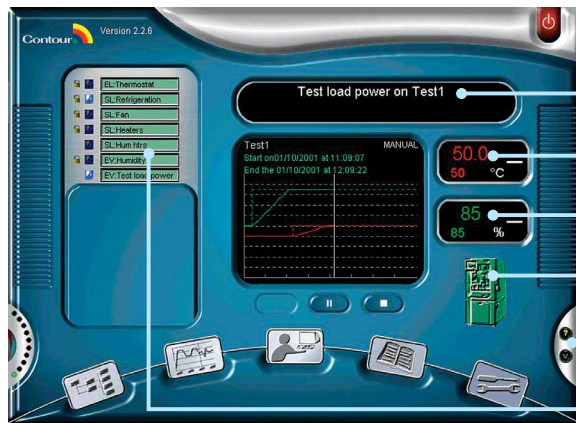
Contour is a powerful but simple to use software package using state of the art technology for programming, logging and supervision of chambers. An almost unlimited number of programmes of multiple segments can be stored and recalled to run both simple or complex test profiles.



Optional laptop adjustable support arm

GRAPHICS INTERFACE

Contour is a 32 bit software package which operates on the Microsoft Windows operating system.



- Scrolling information display
- Temperature set and actual value
- Humidity set and actual value
- Chamber status display
- Contour help
- Digital channel status display

STANDARD CONTOUR FUNCTIONS

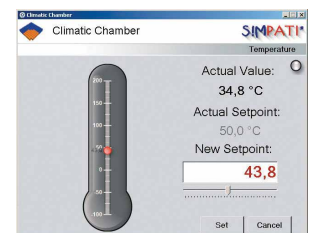
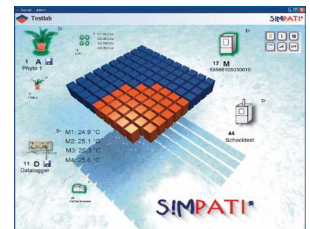
- Real time supervision
- Graphic programming
- Acquisition of test item temperature data
- Chamber health monitor
- Multi graph presentation
- Program updates by the Internet
- Password protected
- Centralised control & monitoring of multiple chambers
- Remote control via RS232/IEEE/Ethernet
- Transfer of data to Excel
- Delayed chamber start up
- Selectable upper & lower abort limits
- Test archiving
- Chamber loading management
- Produce customised reports
- Graph zoom & cursor
- Comprehensive help menu



Simpati

Interfacing with Excel and various word processors, SIMPATI* significantly eases the compilation of sophisticated test reports. This applies for multiple chambers as SIMPATI* allows the monitoring of up to 99 test chambers via a RS 485 or TCP/IP network. Graphical program editors make even complex profiles easily programmable.

The SIMPATI* networking software runs on all recent MS Windows-OS including Vista.



Design Environmental Limited
 32 Rassau Industrial Estate, Ebbw Vale
 Gwent NP23 5SD, South Wales, UK
 Tel: +44 (0)1495 305 555 Fax: +44 (0)1495 303 595
 Email: sales@designenvironmental.co.uk
 Website: www.designenvironmental.co.uk



Weiss Gallenkamp Limited
 Units 37-38, The Technology Centre, Epinal Way
 Loughborough, Leicestershire LE11 3GE, UK
 Tel: +44 (0)1509 631 590 Fax: +44 (0)1509 211 133
 Email: sales@weiss-gallenkamp.com
 Website: www.weiss-gallenkamp.com